

NAAC Institutional Quality Sustenance and Development Survey

IGAC - 2012-2013

Exit this survey

1. Kindly provide the details of the institution

Name of Institution: Mahatma Gandhi Shikshan Mandal's
 Year of Establishment of the Institution: 15th June 1969
 Address Line 1: Yawal Road, Chopda.
 Address Line 2:
 City/Town: Chopda
 State: Maharashtra
 Postal Code: 425107
 Email Address: mgtsm_asc@yahoo.com

2. NAAC Accreditation/ Reaccreditation Details

Year of Accreditation/ Reaccreditation: January 2004
 Current Grade: B+
 CGPA: 75.7

3. Institutional Status

Affiliated Permanent

4. Contact Person Details

Name of Head of Institution: Dr. D. D. Patil
 Contact Phone: (02586) 220140
 Email: gandhalikard@rediffmail.com
 Website URL: www.mgsmasccollegechopda.org

Name of IQAC Co-ordinator

Dr. S. K. Borse

Email:

skborse@rediffmail.c

Prev

Next

SECTION I

This section is related to institutional goals, vision and mission, academic programmes and activities, strategies and action plans for institution building.

5. Number of academic programmes existing (Enter a number; 0 for nil)

Undergraduate (BA/B.Sc./B.Com etc.)	21
Post Graduate (MA/M.Sc./M.Com etc.)	10
Research Programmes (M.Phil/P.hD)	0
Certificate Programmes	3
Professional Programmes (B.Tech/M.Tech/B.Ed/M.Ed/Medicine/Pharmacy/Paramedical/Nursing etc)	0
Other value added programmes	0
Any other programme offered (Specify)	1

6. Details on Programme Development (Enter a number; 0 for nil)

New programmes added during the year	4
New programmes designed	1
Programmes under revision	0
Interdepartmental collaborative programmes	0
Inter institutional collaborative programmes	1
Number of review committee recommendations implemented (Total)	0
Number of NAAC peer team recommendations implemented	10
Number of UGC/any other expert committee recommendations implemented	0
Number of review	

committee recommendation under implementation

Number of NAAC peer team recommendations under implementation

Number of UGC/ any other expert committee recommendations under implementation

7. Faculty Details (Enter a number; 0 for nil)

Total faculty strength required as per norms for all programmes

Total faculty on rolls

Faculty added during the year

Faculty positions vacant

Faculty left during the year

Total number of visiting faculty

Total number of guest faculty

8. Qualification of Faculty

PhD and Above

MPhil

Masters

Any other (Specify)

9. Faculty qualification improvement

PhD awarded to existing faculty

MPhil awarded to existing faculty

Any other degree awarded to existing faculty

10. Administrative Staff Details (Enter a number; 0 for nil)

Administrative staff (total sanctioned)

Administrative staff

(Actual strength)

Added during the year of reporting

Left during the year

Number of posts vacant

11. Technical Support Staff Details (Enter a number; 0 for nil)

Technical Support Staff (Total sanctioned strength)

Technical Support Staff (Actual strength)

Added during the year

Left during the year

Number of posts vacant

Prev

Next

NAAC Institutional Quality Sustenance and Development Survey

[Exit this survey](#)

SECTION II

This section surveys the quality sustenance and development activities during the year taken up by IQAC.

It reflects quality management structure, strategies, and processes which would enhance academic quality of the institution as perceived by faculty, students, alumni, and other stakeholders (social perception of the institution) inline with the vision, mission and goals of the institution.

12. Establishment details

Year of establishment of IQAC

DD	MM	YYYY
15	04	2005

13. Composition of IQAC (Enter a number; 0 for nil)

Number of IQAC members	27
Number of Alumni in IQAC	2
Number of Students in IQAC	3
Number of Faculty in IQAC	9
Number of Administrative Staff in IQAC	3
Number of Technical Staff in IQAC	2
Number of Management Representatives	2
Number of External experts in IQAC	2

Number of any other stakeholder and community representatives

4

14. IQAC Meetings

Number of IQAC meetings held during the year

6

15. Whether Calendar of activities of IQAC formulated for the academic year

Yes

16. IQAC Plans for Development (Enter a number; 0 for nil)

Number of academic programmes proposed

1

Number of value added programmes proposed

0

Number of skill oriented programmes proposed

1

Number of faculty competency and development programmes proposed

3

Number of other staff development programmes proposed

3

Number of student mentoring programmes proposed

9

Number of co-curricular activities proposed

10

Number of inter departmental cooperative schemes proposed

2

Number of
community
extension
programmes
proposed

6

Any other
programmes
proposed (Specify)

0

17. IQAC Plans for development & Implementation (Enter a number; 0 for nil)

Number of academic
programmes
implemented

4

Number of value
added programmes
implemented

0

Number of skill
oriented
programmes
implemented

0

Number of faculty
competency and
development
programmes
implemented

3

Number of other staff
development
programmes
implemented

3

Number of student
mentoring
programmes
implemented

9

Number of co-
curricular activities
implemented

10

Number of inter
departmental
cooperative
programs
implemented

2

Number of
community
extension
programmes
implemented

4

Any other programmes suggested that are implemented (Specify)

0

18. IQAC Seminars and Conferences (Enter a number; 0 for nil)

Number of seminars/ conferences/ workshops organized by IQAC within the institution

1

Number of participants from the institution

25

Number of participants from outside

200

Number of external experts invited

10

Number of external conferences/seminars/ workshops on institutional quality attended

0

Number of events conducted with IQACs of other institutions as collaborative programmes

0

19. Did IQAC receive any funding from UGC during the year ?

Yes

No

20. If the response to Qn. 18 is Yes, please provide the amount received from UGC - (Input 0 - if NA/NIL-) Any other source including internal financial support from the management (Specify amount)

Amount Received from UGC

0

Amount Received from any other source including the college management

0

21. Any significant contribution made by IQAC on quality enhancement during

Current year (Please provide details in bullet format)

- To inspire teacher for minor & major projects
- To promote teachers for M.Phil & Ph.D.
- To persuade teachers for attending & organizing conferences
- To make teacher more community oriented
- To promote for Career Oriented Courses
- API workshop

Prev

Next

NAAC Institutional Quality Sustenance and Development Survey

[Exit this survey](#)

Feedback for improvement provided to the faculty?

SECTION III

In this section the events, activities, and outputs in the field of research and academic areas are being surveyed.

22. Academic Programmes

Number of new academic programmes developed or designed by faculty

0

Number of faculty members involved in curriculum restructuring/revision/syllabus development

16

Number of programmes in which evaluation process reformation taken up and implemented

23

Number of active teaching days during the current academic year

285

Average percentage of attendance of students

82

Percentage of classes engaged by guest faculty and temporary teachers

70

Number of self financed programmes offered

16

Number of aided programmes offered

23

Number of programmes discontinued during the year

0

23. Whether any systematic student feedback mechanism is in place ?

Yes

Details (If answer to Question 20 is Yes)

Percentage of courses where student feedback is taken

100

25. Is feedback for improvement provided to the faculty?

Yes

26. Faculty Research, Projects, and Publication details for the year

Number of major research projects undertaken during the year

0

Number of minor research projects undertaken during the year

7

Number of major ongoing projects

0

Number of minor ongoing projects

7

Number of major projects completed

0

Number of minor projects completed

2

Number of major project proposals submitted for external funding

3

Number of minor project proposals submitted for external funding

19

Number of research publications in peer reviewed journals

0

Number of research publications in international peer reviewed journals

0

Number of research publications in national peer reviewed journals

9

Number of research papers accepted for publication in international peer reviewed journals

0

Number of research

2

NAAC Institutional Quality Sustenance and Development Survey

publication in national peer reviewed journals	
Average of impact factor of publications reported	0.5 1
Number of books published	1
Number of edited books published	1
Number of books (single authored) published	1
Number of books (coauthored) published	4
Numbers of conferences attended by faculty	60
Number of international conferences attended	7
Number of national conferences attended	53
Number of papers presented in conferences	45
Number of papers presented in international conferences	10
Number of papers presented in national conferences	35
Number of conferences organized by the institution	1
Number of faculty acted as experts resource persons	2
Number of faculty acted as experts resource persons - international	2
Number of faculty acted as experts resource persons- national	4
Number of collaborations with international institutions	1
Number of collaborations with national institutions	2
Number of linkages created during the year	0

Total budget for research for current year as a percentage of total institution budget

Amount of external research funding received in the year

Number of patents received in the year

Number of patents applied for in the year

Number of research awards/ recognitions received by faculty and research fellows of the institute in the year

Number of PhDs awarded during the year

Percentage of faculty members invited as external experts/resource persons/reviewers/referees or any other significant research activities

Prev

Next

NAAC Institutional Quality Sustenance and Development Survey

[Exit this survey](#)

SECTION IV

This section deals with Student Mentoring and Support System existing in the institution. This includes student activities, mentoring, and opportunities for development and inclusive practices.

27. Student Details and Support Mechanisms

The total intake of students for various courses (Sanctioned)	<input type="text" value="3060"/>
Actual enrollment during the year	<input type="text" value="2189"/>
Student dropout percentage during the year	<input type="text" value="5"/>
Success percentage in the final examination across the courses	<input type="text" value="80"/>
Number of academic distinctions in the final examination and percentage	<input type="text" value="20"/>
Number of students who got admitted to institutions of national importance	<input type="text" value="2"/>
Number of students admitted to institutions abroad	<input type="text" value="0"/>
Number of students qualified in UGC NET/ SET	<input type="text" value="2"/>
Number of students qualified GATE/ CAT/ other examination	<input type="text" value="0"/>

(Specify)

28. Does student support mechanism exist for coaching for competitive examinations?

Yes

29. Student participation, if response is yes to Qn. 27

Number of students participated

80

30. Does student counselling and guidance service exist ?

Yes

31. Student participation, if answer to Qn. 29 is yes

Number of students participated

120

32. Career Guidance

Number of career guidance programmes organized

4

Percentage of students participated in career guidance programmes

80

33. Is there provision for campus placement?

Yes

34. If yes to Qn. 32

Number of students participated in campus selection programmes

0

Number of students selected for placement during the year

0

Number of students
received notable
national/international
achievements/recognition

0

40. Student initiatives

Number of
community
upliftment
programmes initiated
by students

2

Number of literary
programmes initiated
by students

2

Number of social
action initiatives
based on science /
environment initiated
by students

2

Number of student
research initiatives

75

Prev

Next

NAAC Institutional Quality Sustenance and Development Survey

SECTION V

This section surveys the Governance and Innovation at the institution related to quality management. The educational management strategies adopted and in practice for achieving the objectives are focussed.

41. Whether perspective plan for overall developmental activities is created ?

Yes

No

42. If the answer for Qn. 40 is Yes, is the plan implemented and monitored ?

Yes

No

Whether benchmarking is created for institutional quality management efforts ?

Yes

No

44. If the answer to Question 42 is Yes, please list the benchmarking in various areas of development in bullet format

Comment Class: 10/01/17

- * New administrative building
- * Tennis court
- * Campus interview
- * Garden development

45. Is a Management Information System (MIS) in place ?

Yes

No

46. If answer to question 44 is Yes, please provide details of MIS applied to

1. Administrative procedures including finance

2. Student admission

3. Student records

4. Evaluation and examination procedures

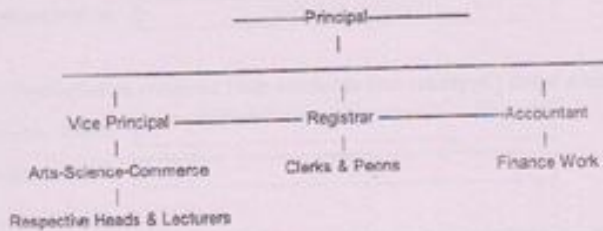
5. Research administration

6. Others

(enter the respective details corresponding to the serial numbers)

NAAC Institutional Quality Sustenance and Development Survey

Administrative procedures including finance - Administration is done by following hierarchy.



2. Student admission - Total procedure of admission is computerized. We use vidhi software for this purpose. The North Maharashtra University Jalgaon has also introduced MKCL Software for Admission process. Students have fill up their admission form as well as eligibility form of North Maharashtra University at the same time while applying for admission. For this year online admission process for first year students is applied by the university. The students have to fill up their personal information and after that they can get admission in the college.
3. Student records - Admission record of the student is kept year wise and class wise in the office. General register of admitted students is also kept.
4. Evaluation and examination procedures - There is CGPA and semester system. Examination is conducted by university. The evaluation of theory papers of FYBA/Bcom/BSc. is at college level while that of SY/TY BA,Bcom,BSc. theory evaluation is done through CAP program at University level. The results are declared by University.
5. Research administration - it is done by the Principal and Vice-Principals time to time

47. Existence of learning resource management

Yes

No

Database in library

ICT and smartclass room

e-learning sources (e-Books, e-Journals)

Production of teaching modules

Interactive learning facilities

48. Internal resource mobilization : Kindly provide the amount contributed

Research	18000
Consultancy and training	0
Student contribution	0
Alumni contribution	0
Wellwishers	0

49. Infrastructure and welfare spending: Please specify the amount

Amount spent for infrastructure development	8500000
Amount spent for student welfare	30000
Amount spent for staff welfare	20000

50. Is delegation of authority practiced

Yes

No

51. Does grievance redressal cell exist ?

Yes

No

Faculty

Students

Staff

52. Grievances received from faculty and resolved (Enter a number; 0 for nil)

Number of grievances received

Number of grievances resolved

33. Number of grievances received from students and resolved (Enter a number; 0 for nil)

Number of grievances received

Number of grievances resolved

34. Number of grievances received from other staff members and resolved (Enter a number; 0 for nil)

Number of grievances received

Number of grievances resolved

35. Has the institution conducted any SWOT analysis during the year

Yes

No

36. The SWOT analysis was done by internal or by external agency

Internal

External

37. Kindly provide three identified strengths from SWOT Analysis (in bullet format)

- * Improve research and library facility
- * Innovative and creative environment for students
- * Faculty is a part of statutory bodies in University

38. Kindly provide three identified weaknesses from the SWOT analysis (in bullet format)

- * No NRI students
- * Economical, educational poor and rural background students
- * Weak faculty / student exchange program

39. Kindly provide two opportunities identified from the SWOT analysis (in bullet format)

- * UG to Ph.D. educational facility
- * Availability of dual degree program
- * Lab to land experimentation

40. Kindly provide two identified challenges/threats from SWOT analysis (in bullet format)

- * Due to lack of industries, job opportunities are rare
- * Paucity of non salary grants

41. Identify any significant progress made by the institution towards acheiving the goals and objectives during the year (list below in bullet format)

- * Opening of professional course such as BBA, BCA, MBM, M.Sc. (Zoo) and M.A. (Politics)
- * Research Laboratory recognition for Ph.D.
- * Recruitment of qualified staff
- * Organization of various programmes, camps, workshops and conferences for teachers and students

42. How do you perceive the role of NAAC in the quality development of your institution (Suggestions in bullet format to be given below)

- * Continuous quality check program should be implemented per year

NAAC Institutional Quality Sustenance and Development Survey

Exit this survey

CONCLUDING REMARKS

This exercise is intended to make a self analysis of the quality development of the institution during the year. The perspective plan and implementation for every year is to be documented and analysed to get a cumulative index for the period of accreditation and reaccreditation. Any substantial changes / initiative in this direction is to be separately listed. The best practices in various areas can be listed as a separate annexure. The data will be used to create a quality profile based on the total score index arrived at and this would help to map the institutions' strengths and areas of improvement.

NAAC will provide feedback and a quality profile based on analysis of your inputs if you desire so.

Thank you for your participation.

Prev

Done