

2011-12

Online Submission of AQAR on 21/12/2012

## NAAC Institutional Quality Sustenance and Development Survey

Exit this survey

### 1. Kindly provide the details of the institution

Name of Institution: Mahatma Gandhi Shikshan Mandal's

Year of Establishment of the Institution: 15 JUN 1969

Address Line 1: Yawal Road, Chopda.

Address Line 2:

City/Town: CHOPDA

State: MAHARASHTRA

Postal Code: 425107

Email Address: mgtsm\_asc@yahoo.com

### 2. NAAC Accreditation/ Reaccreditation Details

Year of Accreditation/ Reaccreditation: January 2004

Current Grade: B+

CGPA: 75.7

### 3. Institutional Status

Affiliated Permanent

### 4. Contact Person Details

Name of Head of Institution: Dr. D. D. Patil

Contact Phone: 02586220140

Email: gandhalikard@rediffmail.com

Website URL: www.mgsmascollegechopda.org

Name of IQAC Co-ordinator

Dr. S. K. Borse

Email:

skborse@rediffmail.c

Prev

Next

# Institutional Quality Sustenance and Development Survey

Exit this survey

## SECTION I

This section is related to institutional goals, vision and mission, academic programmes and activities, strategies and action plans for institution building.

### Number of academic programmes existing ( Enter a number; 0 for nil)

Undergraduate (BA/B.Sc./B.Com etc.)	19
Graduate (MA/M.Sc./M.Com etc.)	6
Research Programmes (M.Phil/P.hD)	0
Postgraduate Programmes	2
Professional Programmes (B.Tech/M.Tech/B.Ed/M.Ed/Medicine/Pharmacy/Paramedical/Nursing)	0
Other value added programmes	0
Other programme offered (Specify)	2

### Details on Programme Development ( Enter a number; 0 for nil)

Number of programmes added during the year	1
Number of programmes designed	4
Number of programmes under consideration	0
Number of interdepartmental collaborative programmes	0
Number of institutional collaborative programmes	1
Number of review committee recommendations implemented (Total)	0
Number of NAAC peer review recommendations implemented	10
Number of UGC/any other expert committee recommendations implemented	0
Number of review	



committee recommendation under implementation	<input type="text" value="2"/>
Number of NAAC peer team recommendations under implementation	<input type="text" value="1"/>
Number of UGC/ any other expert committee recommendations under implementation	<input type="text" value="0"/>

Please enter a positive number.

**7. Faculty Details ( Enter a number; 0 for nil)**

Total faculty strength required as per norms for all programmes	<input type="text" value="49"/>
Total faculty on rolls	<input type="text" value="36"/>
Faculty added during the year	<input type="text" value="0"/>
Faculty positions vacant	<input type="text" value="13"/>
Faculty left during the year	<input type="text" value="0"/>
Total number of visiting faculty	<input type="text" value="6"/>
Total number of guest faculty	<input type="text" value="0"/>

Please enter a positive number.

**8. Qualification of Faculty**

PhD and Above	<input type="text" value="10"/>
MPhil	<input type="text" value="16"/>
Masters	<input type="text" value="14"/>
Any other (Specify)	<input type="text" value="0"/>

**9. Faculty qualification improvement**

PhD awarded to existing faculty	<input type="text" value="2"/>
MPhil awarded to existing faculty	<input type="text" value="0"/>
Any other degree awarded to existing faculty	<input type="text" value="0"/>

**10. Administrative Staff Details ( Enter a number; 0 for nil)**

Administrative staff

(total sanctioned) 15  
Administrative staff (Actual strength) 12  
Added during the year of reporting 0  
Left during the year 0  
Number of posts vacant 3

**11. Technical Support Staff Details (Enter a number; 0 for nil)**

Technical Support Staff (Total sanctioned strength) 45  
Technical Support Staff (Actual strength) 34  
Added during the year 0  
Left during the year 1  
Number of posts vacant 11

Prev Next

# IAAC Institutional Quality Sustenance and Development Survey

Exit this survey

## SECTION II

This section surveys the quality sustenance and development activities during the year taken up by IQAC.

It reflects quality management structure, strategies, and processes which would enhance academic quality of the institution as perceived by faculty, students, alumni, and other stakeholders (social perception of the institution) inline with the vision, mission and goals of the institution.

### 12. Establishment details

Year of establishment of IQAC

DD	MM	YYYY
15	04	2005

### 13. Composition of IQAC ( Enter a number; 0 for nil)

Number of IQAC members	27
Number of Alumni in IQAC	2
Number of Students in IQAC	3
Number of Faculty in IQAC	9
Number of Administrative Staff in IQAC	3
Number of Technical Staff in IQAC	2
Number of Management Representatives	2
Number of External experts in IQAC	2



Number of any other stakeholder and community representatives

4

#### 14. IQAC Meetings

Number of IQAC meetings held during the year

2

#### 15. Whether Calendar of activities of IQAC formulated for the academic year

Yes

#### 16. IQAC Plans for Development ( Enter a number; 0 for nil)

Number of academic programmes proposed

5

Number of value added programmes proposed

0

Number of skill oriented programmes proposed

0

Number of faculty competency and development programmes proposed

3

Number of other staff development programmes proposed

3

Number of student mentoring programmes proposed

9

Number of co-curricular activities proposed

10

Number of inter departmental cooperative schemes proposed

2

Number of community extension programmes proposed

6

Any other programmes proposed (Specify)

0

**17. IQAC Plans for development & Implementation ( Enter a number; 0 for nil)**

Number of academic programmes implemented

4

Number of value added programmes implemented

0

Number of skill oriented programmes implemented

0

Number of faculty competency and development programmes implemented

3

Number of other staff development programmes implemented

3

Number of student mentoring programmes implemented

9

Number of co-curricular activities implemented

10

Number of inter departmental cooperative programs implemented

2

Number of community extension programmes implemented

4



Any other programmes suggested that are implemented (Specify)

**18. IQAC Seminars and Conferences ( Enter a number; 0 for nil)**

Number of seminars/ conferences/ workshops organized by IQAC within the institution

Number of participants from the institution

Number of participants from outside

Number of external experts invited

Number of external conferences/seminars/ workshops on institutional quality attended

Number of events conducted with IQACs of other institutions as collaborative programmes

*M/S paid*

**19. Did IQAC receive any funding from UGC during the year ?**

Yes

No

**20. If the response to Qn. 18 is Yes, please provide the amount received from UGC - (Input 0 - if NA/NIL-) Any other source including internal financial support from the management (Specify amount)**

Amount Received from UGC

Amount Received from any other source including the college management

**21. Any significant contribution made by IQAC on quality enhancement during**

current year (Please provide details in bullet format)

- To Persuade teachers for attending & organizing conferences
- To make teachers more community oriented

Prev

Next

# AAAC Institutional Quality Sustenance and Development Survey

Exit this survey

## SECTION III

In this section the events, activities, and outputs in the field of research and academic areas are being surveyed.

### 22. Academic Programmes

- Number of new academic programmes developed or designed by faculty:
- Number of faculty members involved in curricular restructuring/revision/syllabus development:
- Number of programmes in which evaluation process information taken up and implemented:
- Number of active teaching days during the current academic year:
- Average percentage of attendance of students:
- Percentage of classes engaged by guest faculty and temporary teachers:
- Number of self financed programmes offered:
- Number of aided programmes offered:
- Number of programmes discontinued during the year:

23. Whether any systematic student feedback mechanism is in place ?

Yes

24. Feedback Details (If answer to Question 20 is Yes)



Percentage of courses where student feedback is taken

100

25. Is feedback for improvement provided to the faculty?

Yes

26. Faculty Research, Projects, and Publication details for the year

Number of major research projects undertaken during the year

0

Number of minor research projects undertaken during the year

4

Number of major ongoing projects

0

Number of minor ongoing projects

6

Number of major projects completed

0

Number of minor projects completed

2

Number of major project proposals submitted for external funding

1

Number of minor project proposals submitted for external funding

1

Number of research publications in peer reviewed journals

17

Number of research publications in international peer reviewed journals

7

Number of research publications in national peer reviewed journals

10

Number of research papers accepted for publication in international peer reviewed journals

1

Number of research papers accepted for

0

publication in national  
peer reviewed journals

Average of impact factor of  
publications reported

0.3

Number of books  
published

0

Number of edited books  
published

1

Number of books (single  
authored) published

1

Number of books  
(coauthored) published

0

Numbers of conferences  
attended by faculty

56

Number of international  
conferences attended

5

Number of national  
conferences attended

51

Number of papers  
presented in conferences

33

Number of papers  
presented in international  
conferences

12

Number of papers  
presented in national  
conferences

21

Number of conferences  
organized by the  
institution

3

Number of faculty acted  
as experts resource  
persons

1

Number of faculty acted  
as experts resource  
persons - international

1

Number of faculty acted  
as experts resource  
persons- national

1

Number of collaborations  
with international  
institutions

1

Number of collaborations  
with national institutions

0

Number of linkages  
created during the year

2

Total budget for research for current year as a percentage of total institution budget

Amount of external research funding received in the year

Number of patents received in the year

Number of patents applied for in the year

Number of research awards/ recognitions received by faculty and research fellows of the institute in the year

Number of PhDs awarded during the year

Percentage of faculty members invited as external experts/resource persons/reviewers/referees or any other significant research activities

Prev

Next



# AAC Institutional Quality Sustenance and Development Survey

Exit this survey

6.

## SECTION IV

This section deals with Student Mentoring and Support System existing in the institution. This includes student activities, mentoring, and opportunities for development and inclusive practices.

### 27. Student Details and Support Mechanisms

The total intake of students for various courses (Sanctioned)	2880
Actual enrollment during the year	2283
Student dropout percentage during the year	50
Success percentage in the final examination across the courses	41
Number of academic distinctions in the final examination and percentage	17
Number of students who got admitted to institutions of national importance	0
Number of students admitted to institutions abroad	0
Number of students qualified in UGC NET/ SET	12
Number of students qualified GATE/ CAT/ other examination	2

Specify)

28. Does student support mechanism exist for coaching for competitive examinations?

Yes

29. Student participation, if response is yes to Qn. ~~28~~ <sup>28</sup>

Number of students participated

72

30. Does student counselling and guidance service exist?

Yes

31. Student participation, if answer to Qn. <sup>30</sup> 29 is yes

Number of students participated

100

32. Career Guidance

Number of career guidance programmes organized

3

Percentage of students participated in career guidance programmes

75

33. Is there provision for campus placement?

Yes

34. If yes to Qn. <sup>33</sup> 32

Number of students participated in campus selection programmes

35

Number of students selected for placement during the year

6

35. Does gender sensitization program exist ?

Yes

36. If Answer is Yes to Qn 34 <sup>35</sup>

Number of programmes organized

10

37. Student activities

Number of students participated in external cultural events

31

Number of prizes won by students in external cultural events

0

Number of cultural events conducted by the institute for the students

6

Number of students participated in international sports and games events

0

Number of students participated in national level sports and games events

0

Number of students participated in state level sports and games events

0

Number of students participated in university level sports and games events

4

Number of prizes won by students in international sports and games events

0

Number of prizes won by students in national level sports

0



and games events

Number of prizes  
won by students in  
state level sports  
and games events

0

Number of prizes  
won by students in  
university level  
sports and games  
events

0

Number of sports  
and games events  
conducted by the  
institute for the  
students

1

### 38. Composition of students

Percentage of  
Scheduled Caste

7

Percentage of  
Scheduled Tribe

5

Percentage of other  
backward  
communities

54

Percentage of  
women students

43

Percentage of  
physically  
challenged

0

Percentage of rural  
students

58

Percentage of urban  
students

42

79  
hh

### 39. Scholarships and Financial Support

Number of students  
availing financial support  
from the institution

0

Amount disbursed as  
financial support from the  
institution

0

Number of students  
awarded scholarship  
from the institution

0

SECTION V

This section surveys the Governance and Innovation at the institution related to quality management. The educational management strategies adopted and in practice for achieving the objectives are focussed.

41. Whether perspective plan for overall developmental activities is created ?

Yes

No

42. If the answer for Qn. 40 is Yes, is the plan implemented and monitored ?

Yes

No

43. Whether benchmarking is created for institutional quality management efforts ?

Yes

No

44. If the answer to Question 42 is Yes, please list the benchmarking in various areas of development in bullet format

- \* Smart Class Rooms
- \* Seminar Hall
- \* Campus Interviews

45. Is a Management Information System (MIS) in place ?

Yes

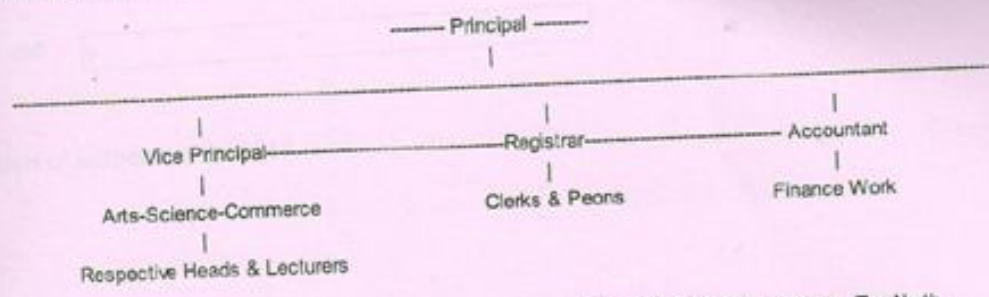
No

46. If answer to question 44 is Yes, please provide details of MIS applied to

1. Administrative procedures including finance
2. Student admission
3. Student records
4. Evaluation and examination procedures
5. Research administration
6. Others

(enter the respective details corresponding to the serial numbers)

1. Administrative procedures including finance - Administration is done by following hierarchy.



2. Student admission - total procedure of admission is computerized. we use viddhi software for this purpose. The North Maharashtra University Jalgaon has also introduced MKCL Software for Admission process. Students have fill up their admission form as well as eligibility form of North Maharashtra University at the same time while applying for admission. From 2012-13 Online Admission Process for first year students is applied by the university. The students have to fill up their personal information and after that they can get admission in the college.

3. Student records - Admission record of the student is kept year wise and class wise in the office. General register of admitted students is also kept.

4. Evaluation and examination procedures - There is CGPA and semester system. Examination is conducted by university. The evaluation of theory papers of FYBA/BCom/BSc. is at college level while that of SY/TY BA,BCom,BSc. theory evaluation is done through CAP program at University level. The results are declared by University.

5. Research administration - It is done by the Principal and Vice-Principals time to time

**47. Existence of learning resource management**

Yes

No

- e-Database in library
- ICT and smartclass room
- e-learning sources (e-Books, e-Journals)
- Production of teaching modules
- Interactive learning facilities

**48. Internal resource mobilization : Kindly provide the amount contributed**

Research	0
Consultancy and training	0
Student contribution	0
Alumni contribution	0
Wellwishers	0

**49. Infrastructure and welfare spending: Please specify the amount**

Amount spent for infrastructure development



Amount spent for student welfare

Amount spent for staff welfare

50. Is delegation of authority practiced

Yes  
No

51. Does grievance redressal cell exist ?

Yes

No

Faculty  
Students  
Staff

52. Grievances received from faculty and resolved ( Enter a number; 0 for nil)

Number of grievances received

Number of grievances resolved

53. Number of grievances received from students and resolved ( Enter a number; 0 for nil)

Number of grievances received

Number of grievances resolved

54. Number of grievances received from other staff members and resolved ( Enter a number; 0 for nil)

Number of grievances received

Number of grievances resolved

55. Has the institution conducted any SWOT analysis during the year

Yes  
No

56. The SWOT analysis was done by internal or by external agency

Internal  
External

57. Kindly provide three identified strengths from SWOT Analysis (in bullet format)

Research capabilities

Well equipped gym  
100 mt. running track  
Dress Code

58. Kindly provide three identified weaknesses from the SWOT analysis (in bullet format)

No students from other state & NRI  
No virtual class rooms  
Weak alumni

59. Kindly provide two opportunities identified from the SWOT analysis (in bullet format)

\* Lab to Land experimentation  
\* Dairy products  
\* Medicinal Plants  
\* Domestication of bees

60. Kindly provide two identified challenges/threats from SWOT analysis (in bullet format)

\* Due to lack of industries job opportunities are rare for our students  
\* Student intake problem may arise due to an opening of college at neighbourhood

61. Identify any significant progress made by the institution towards achieving the goals and objectives during the year (list below in bullet format)

\* Opening of professional courses such as BBA, BCA, & MBM,  
\* Research Laboratory recognition for Ph.D.  
\* Various PG courses started  
\* Recruitment of qualified staff  
\* Organization of various programmes, camps, workshops & conferences for teachers & students

62. How do you perceive the role of NAAC in the quality development of your institution (Suggestions in bullet format to be given below)

\* Direct Information should be given to institution by e-mail

Prev

Next